



KASTO. From the Beginning.

Metal Sawing Machines and Storage Systems for Workshops.

No Compromises!

KASTO's Entire Know-How is in the Compact Saw and Universal Saw Program.

Profitability depends upon the right decisions.

KASTO offers a diversified program of sawing machines for workshops – especially designed for small to medium-sized companies. Extremely reliable and precise machines are available even for small or occasional cutting jobs. KASTO's experience and know-how can be found in every compact saw and universal saw. Quality without compromises.

A convincing rate of price and performance.

The investment in a KASTO saw is always worthwhile. Especially compact and universal cut saws offer a compelling price-performance ratio for the workshop and training facilities as well as for the metal working industry.

The Way to Find the Right Machine: The KASTO Quickfinder for Compact Saws

Criteria	KASTOhbs 1 / 2	KASTOpsb 2 / 4	KASTOmicut P 2.6	KASTOmicut E 2.6 / U 2.6	KASTOmicut A 2.6	KASTOradial M 4 / M 6	KASTOradial M7/10/U7/10	KASTOalu U12 / U14 / U20	KASTOalu A 13
Saw Type									
Power Hacksaw	●	●							
Band Saw			●	●	●				
Circular Saw						●	●	●	●
Degree of Automation									
Single cut, manual	■	■	■	■	–	■	■	–	–
Single cut, semi-automatic	–	–	–	■	■	–	■	■	■
Serial cut, fully automatic	–	–	–	–	■	–	–	–	■
Type of Cut									
90° cut	■	■	■	■	■	■	■	■	■
Miter cut, one side	□	□	■	■	■	■	■	■	–
Miter cut, both sides	–	–	■	■	■	■	■	■	–
Material Quality									
Structural steels	■	■	■	■	■	■	■	–	–
Difficult to cut material	□	■	□	■	■	–	□	–	–
Aluminium	■	■	■	■	■	□	□	■	■
Plastic	□	□	□	□	□	□	□	■	■

■ suitable □ partly suitable – not suitable

Complete program,
complete service.

You can always rely on a comprehensive and individual consultation as well as on fast service and reliable spare parts service. The table below allows you to find the right machine based on performance and application. Visit KASTO on the internet to find the complete program with all technical information with one click: www.KASTO.com

... and Universal Saws.

Criteria	KASTOcut GE 4	KASTOcut GU 4	KASTOcut DU 4	KASTOpos GA 4	KASTOverso A 2	KASTOtwin U 4	KASTOwin A 3.3	KASTOwin A 4.6
Saw Type								
Power Hacksaw								
Band Saw	●	●	●	●	●	●	●	●
Circular Saw								
Degree of Automation								
Single cut, manual	–	–	–	–	–	–	–	–
Single cut, semi-automatic	■	■	■	■	■	■	■	■
Serial cut, fully automatic	–	–	–	■	■	–	■	■
Type of Cut								
90° cut	■	■	■	■	■	■	■	■
Miter cut, one side	■	■	■	■	–	–	–	–
Miter cut, both sides	–	–	■	–	–	–	–	–
Material Quality								
Structural steels	■	■	■	■	■	■	■	■
Difficult to cut material	□	□	□	□	□	■	■	■
Aluminium	■	■	■	■	■	■	■	■
Plastic	□	□	□	□	□	□	□	□

■ suitable □ partly suitable – not suitable

Made by KASTO

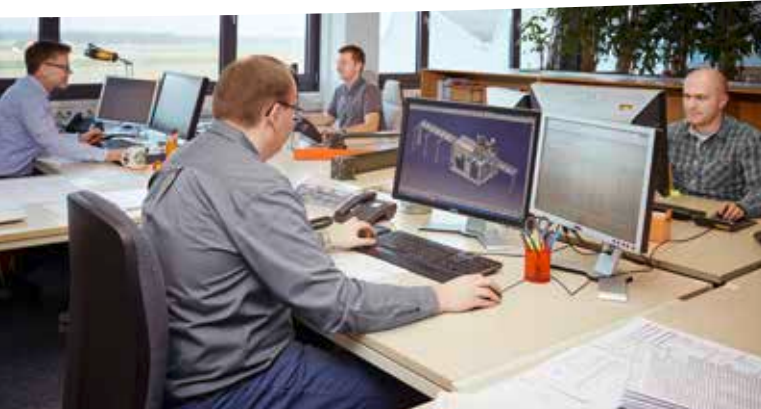
Not "just" delivering saws and storage systems:
KASTO offers More ...

Perfect sawing and storing – this demand is not enough for KASTO. The company relies on added values which pay off for customers and employees in hard cash. "More Profile", for example, stands for corporate values such as customer success orientation, reliability and progressiveness and "More Responsibility" stands for resilience and durability of the products, customer relations and corporate decisions. KASTO is committed to Germany as a location for industry and to Quality "Made in Germany".

KASTO's core competences lie in technology and product development affected by high creativity as well as in solid machine construction. That's why it's not just assembled at KASTO but important parts are also manufactured.



Development and design engineering.



Manufacturing.



Assembly.



Show room.



KASTOmicut: Easiest Operating in Daily Use.

Mitre cutting bandsaw KASTOmicut P 2.6: Manual swivelling frame bandsaw – The Entry-Level Version

Characteristics:

- Frequency-controlled infinitely saw drive
- Saw feed adjustable by weight of saw head
- Infinitely adjustable mitre angle (-45° to +60°)
- Cutting rail as material support
- Manual material clamping
- Automatic machine shut-off after finished cut

Technical Data		KASTOmicut P 2.6
Cutting range		
90° (○ / ● / □ / ▣ / ■)	mm	260 / 160 / 310 x 200 / 200 x 200 / 160 x 160
+ 45° (○ / □ / ▣)	mm	230 / 200 x 200 / 200 x 200
+ 60° (○ / □ / ▣)	mm	150 / 140 x 160 / 140 x 140
- 45° (○ / □ / ▣)	mm	230 / 200 x 200 / 200 x 200
Remnant length single cut	mm	30
Length x width x height	mm	760 x 1620 x 1690
Material support height	mm	950
Weight	kg	490
Performance characteristics		
Total power	kW	2.0
Drive Power	kW	1,5
Cutting speed	m/min	20 - 110
Dimensions of saw blade	mm	3.180 x 27 x 0,9



Infinitely variable mitre adjustment.



Infinitely variable saw blade arm adjustment.



Horizontal vice with quick-release lever.



Deep groove ball bearings which are closed on both sides and by carbide sliding guides.



Mitre cutting bandsaw KASTOmicut E 2.6: Manual swivelling frame bandsaw – The Allrounder

Characteristics:

- Frequency-controlled infinitely saw drive
- Fully hydraulic saw feed control
- Horizontal clamping vice with fast adjustment
- Infinitely adjustable mitre angle (-45° to +60°)
- Infinitely adjustable guide arm positioning
- Coolant system with two coolant nozzles

Technical Data		KASTOmicut E 2.6
Cutting range		
90° (○ / ● / □ / ▢ / ■)	mm	260 / 160 / 310 x 200 / 200 x 200 / 160 x 160
+ 45° (○ / □ / ▢)	mm	230 / 200 x 200 / 200 x 200
+ 60° (○ / □ / ▢)	mm	150 / 140 x 160 / 140 x 140
- 45° (○ / □ / ▢)	mm	230 / 200 x 200 / 200 x 200
Remnant length single cut	mm	30
Length x width x height	mm	760 x 1620 x 1690
Material support height	mm	950
Weight	kg	490
Performance characteristics		
Total power	kW	2.0
Drive Power	kW	1,5
Cutting speed	m/min	20 - 110
Dimensions of saw blade	mm	3.180 x 27 x 0,9



Good accessibility for fast saw blade change.

Wear-free material support.



Infinitely variable cutting speed via frequency regulated drive.



Synchronously running chip removal brush.



Mitre cutting bandsaw KASTOmicut U 2.6: Semi-automatic swivelling frame bandsaw

Characteristics:

- Frequency-controlled infinitely saw drive
- Rotary table as material support
- Fully hydraulic saw feed control
- Horizontal vice with quick adjustment and hydraulic short stroke
- Infinitely adjustable mitre angle (-45° to +60°)
- Infinitely variable saw blade arm adjustment
- Coolant system with two coolant nozzles

Technical Data		KASTOmicut U 2.6
Cutting range		
90° (○ / ● / □ / □ / ■)	mm	260 / 160 / 310 x 200 / 200 x 200 / 160 x 160
+ 45° (○ / □ / □)	mm	230 / 200 x 200 / 200 x 200
+ 60° (○ / □ / □)	mm	150 / 140 x 160 / 140 x 140
- 45° (○ / □ / □)	mm	230 / 200 x 200 / 200 x 200
Remnant length single cut	mm	30
Length x width x height	mm	760 x 1620 x 1690
Material support height	mm	950
Weight	kg	490
Performance characteristics		
Total power	kW	2.0
Drive Power	kW	1,5
Cutting speed	m/min	20 - 110
Dimensions of saw blade	mm	3.180 x 27 x 0,9



Infinitely variable mitre adjustment.



Saw blade tensioning manually adjustable.



Mitre Cutting without Length Correction by "ideal" centre of rotation.



Material clamping by hydraulic short stroke vice.



Mitre cutting bandsaw KASTOmicut A 2.6: Fully-automatic swivelling frame bandsaw

Characteristics:

- Easy to operate control *SmartControl*
- Frequency-controlled infinitely saw drive
- Infinitely variable and fully hydraulic saw feed control
- Two hydraulic horizontal clamping vices
- Electromotive material feed via ball screw spindle
- Infinitely adjustable mitre angle (-45° to +60°)
- Infinitely adjustable guide arm positioning
- Coolant system with two coolant nozzles
- Cutting height recognition via memory key
- Hydraulic horizontal clamping vice with material-end sensor
- Min. rpm monitor (*SpeedControl*)

Technical Data		KASTOmicut A 2.6	
Cutting range			
90° (○ / ● / □ / ▢ / ■)	mm	260 / 160 / 310 x 260 / 260 x 260 / 160 x 160	
+ 45° (○ / □ / ▢)	mm	230 / 200 x 260 / 200 x 200	
+ 60° (○ / □ / ▢)	mm	150 / 140 x 160 / 140 x 140	
- 45° (○ / □ / ▢)	mm	230 / 200 x 260 / 200 x 200	
Material feed length, single cut	mm	500	
Material feed length, multipl. feed		9.999	
Remnant length single cut	mm	30	
Remnant length automatic operation	mm	60	
Length x width x height	mm	2.120 x 2.885 x 1690	
Material support height	mm	950	
Weight	kg	1.300	
Performance characteristics			
Total power	kW	2,5	
Drive Power	kW	1,5	
Cutting speed	m/min	20 - 110	
Dimensions of saw blade	mm	3.180 x 27 x 0,9	



Good accessibility for fast saw blade change.

Hydraulic horizontal clamping vices.



Material feed via ball screw spindle, infinitely adjustable mitre angle.



Machine enclosure according to the latest machine guidelines.



Comprehensive Program, Complete Accessories: This Makes Your KASTO Machine Even More Efficient.

KASTO accessories adapt each machine perfectly to its respective task. For this KASTO offers reasonable accessory solutions reconciled to the requirements. Micro-spray lubrication systems are available for coolant-free cutting, perfect for cutting profiles. Machine lamps light the working area. Multiple clamping devices allow layer cutting to improve machine utilization and efficiency.

KASTO accessories advance reliability and flexibility – especially important if the KASTO Compact Saw is the only saw in use. And KASTO accessories come with the same high quality standards as the Compact Saw.

For an effective application of semi- and fully automatic sawing machines several different concepts for roller conveyors are available. A broad accessories program of roller conveyors and measuring systems as well as safety devices allows customized installations.

Drip lubricator.



Micro-spray lubrication system.



Micro-spray lubrication system.



Multiple clamping device.

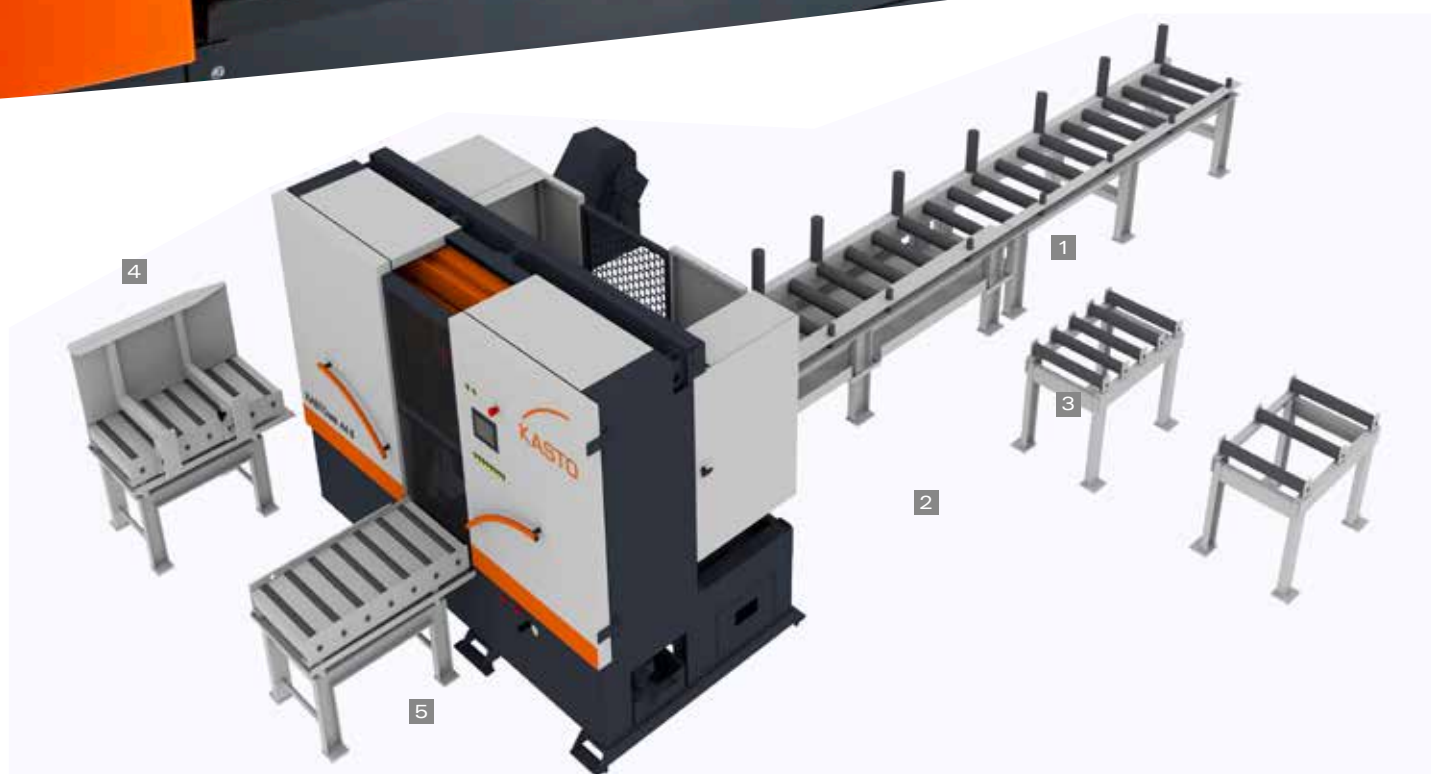


Hydraulic bundle clamping device at the outfeed side.



Hydraulic bundle clamping device at the infeed side.



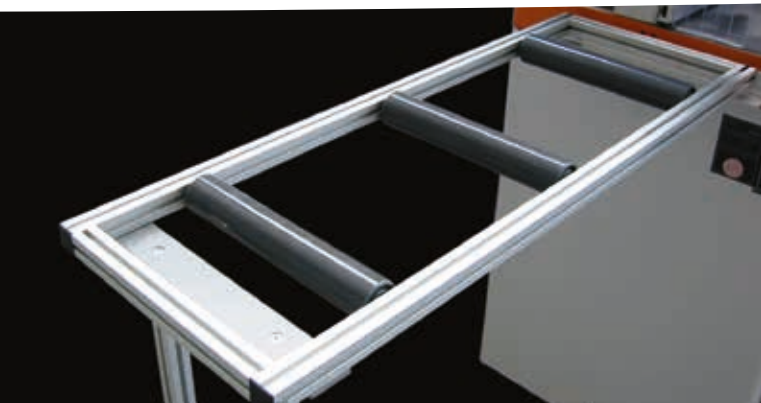


- 1 dif. Infeed roller conveyors with rollover protection and side guide plates optionally with coolant return flow and frequency-controlled drive
- 2 roller conveyor, 5 rolls
- 3 roller conveyor, 3 rolls
- 4 Outfeed roller conveyor, approx. 1 m with side guide plate
- 5 Outfeed roller conveyor approx. 1 m with rollover protection

Roller Conveyors for Material Infeed and Outfeed Side up to 450 kg/m.

	Carrying capacity kg/m	length mm	roller conveyor width mm	usable width mm	number of support rollers	diameter of rollers mm	distance between roller centres mm	side guiding rollers
Infeed/outfeed side	25	1.000	470	410	3	50	333	-
Infeed/outfeed side	25	2.000	470	410	5	50	333	-
Infeed/outfeed side	150	1.142	220	207	4	40	286	-
Infeed/outfeed side	150	2.000	220	207	7	40	286	-
Infeed/outfeed side	250	1.060	470	380	5	50	2 x 152 2 x 304	optional
Infeed/outfeed side	250	2.130	470	380	8	50	2 x 152 4 x 304 1 x 456	optional
Infeed/outfeed side	450	1.020	600	420	4	40/solid steel	2 x 280 1 x 340	3
Infeed/outfeed side	450	2.040	600	420	7	40/solid steel	2 x 280 4 x 340	5
Infeed/outfeed side	450	3.060	600	420	10	40/solid steel	2 x 280 7 x 340	6
Infeed/outfeed side	450	4.080	600	420	13	40/solid steel	2 x 280 10 x 340	8
Infeed/outfeed side	450	5.100	600	420	16	40/solid steel	2 x 280 12 x 340	10
Infeed/outfeed side	450	6.120	600	420	19	40/solid steel	2 x 280 15 x 340	12

Roller conveyor for carrying capacity of 25 kg/m.



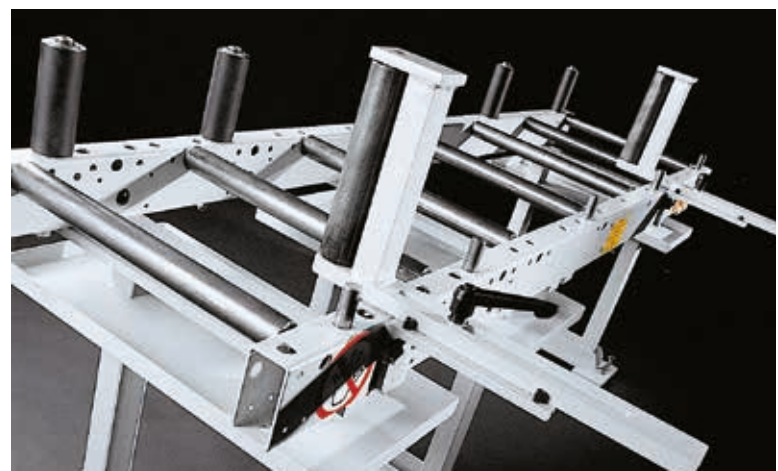
Roller conveyor for carrying capacity of 150 kg/m.



Roller conveyor for carrying capacity of 250 kg/m.



Roller conveyor for carrying capacity of 450 kg/m.



Roller Conveyors for Material Infeed and Outfeed Side up to 3000 kg/m.

	Carrying capacity kg/m	length mm	roller conveyor width mm	usable width mm	number of support rollers	diameter of rollers mm	distance between roller centres mm	side guiding rollers
Infeed roller conveyor driven/non-driven	2.000	3.444	420/680	260/520	11	70	5 x 238 5 x 428	6
Infeed roller conveyor driven/non-driven	2.000	5.587	420/680	260/520	16	70	5 x 238 10 x 428	8
Extension of roller conveyor driven/non-driven	2.000	2.253	420/620	260/520	6	70	5 x 428	2
Short roller conveyor	3.000	1.000	690	550	3	70	2 x 428	-
Short roller conveyor	3.000	1.000	690	550	5	70	4 x 214	-
Outfeed roller conveyor	3.000	1.050	510/710	430/630	7	90	6 x 150	-

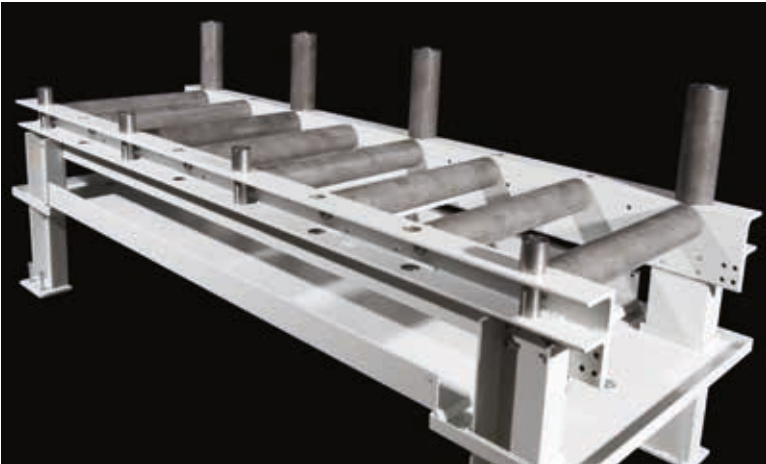
Short roller conveyor with three rollers.



Short roller conveyor with five rollers.

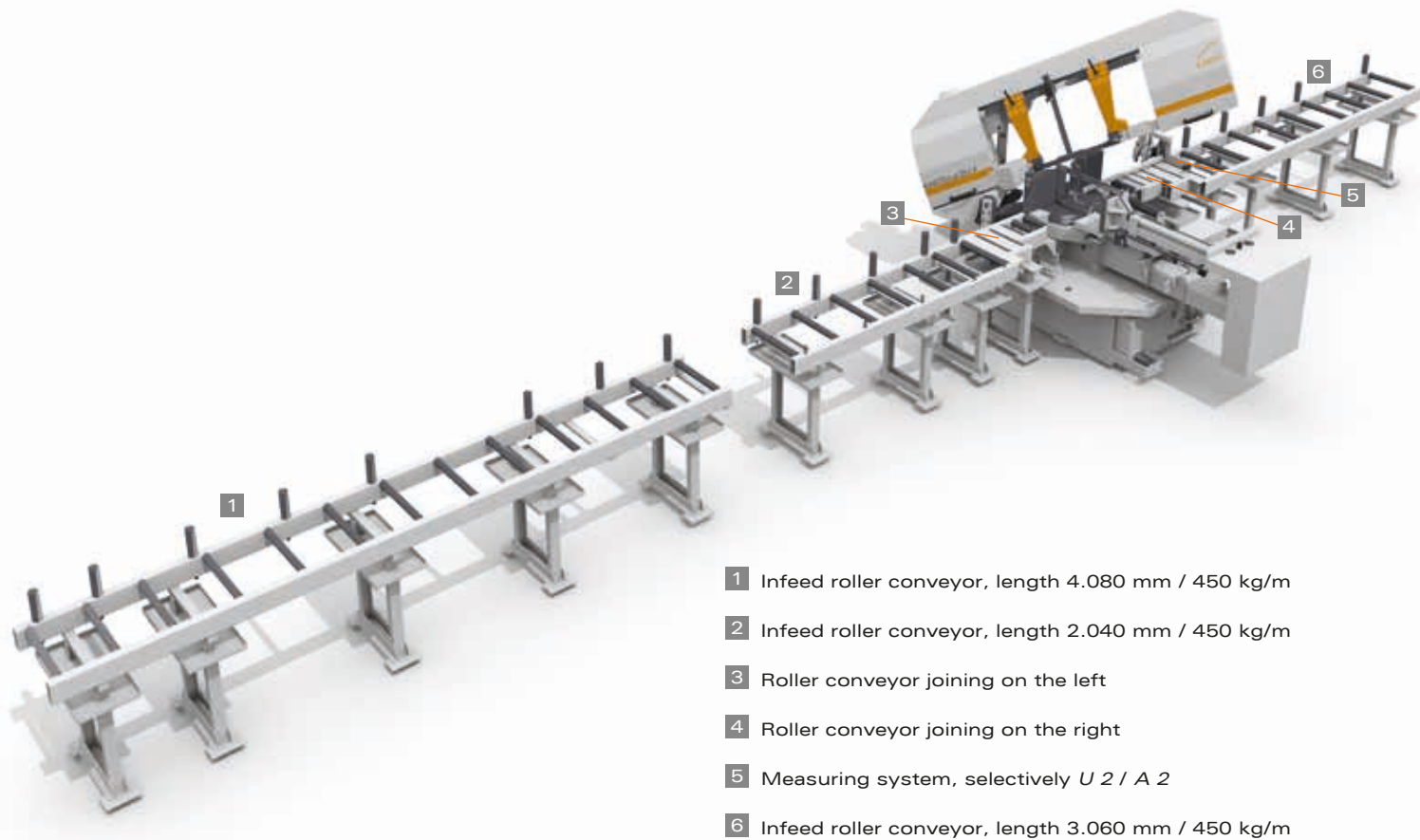


Roller conveyor with a carrying capacity of 2 to and coolant return (option).



Outfeed roller conveyor with a carrying capacity of 3 to.



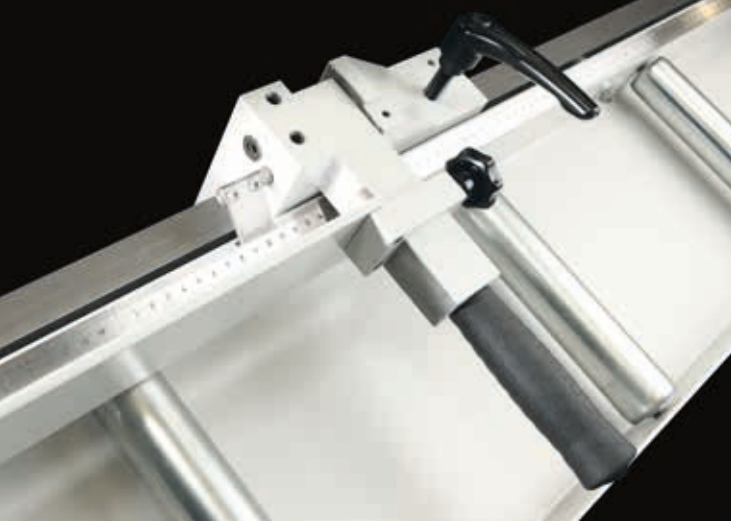


- 1 Infeed roller conveyor, length 4.080 mm / 450 kg/m
- 2 Infeed roller conveyor, length 2.040 mm / 450 kg/m
- 3 Roller conveyor joining on the left
- 4 Roller conveyor joining on the right
- 5 Measuring system, selectively U 2 / A 2
- 6 Infeed roller conveyor, length 3.060 mm / 450 kg/m

The KASTO Quickfinder for Roller Conveyors.

Overview roller conveyors	Infeed roller conveyor							Outfeed roller conveyor
	SRC* 3000 kg/m	25 kg/m	150 kg/m	250 kg/m	450 kg/m	2000 kg	3000 kg	3000 kg
Typ								
KASTOalu		●						
KASTOhbs 1 / 2	●							
KASTOpsb 2 / 4	●							
KASTOradial M 4 / 6 / 7 / 10			●					
KASTOradial U 7 / 10			●					
KASTOmicut P / E / U / A 2.6				●				
KASTOcut GE 4	●				●			●
KASTOcut GU 4	●				●			●
KASTOcut DU 4	●				●		●	●
KASTOpos GA 4	●				●			●
KASTOverto A 2	●				●	●		
KASTOtwinn U 4	●					●		●
KASTOwin A 3.3	●					●		●
KASTOwin A 4.6	●					●		●

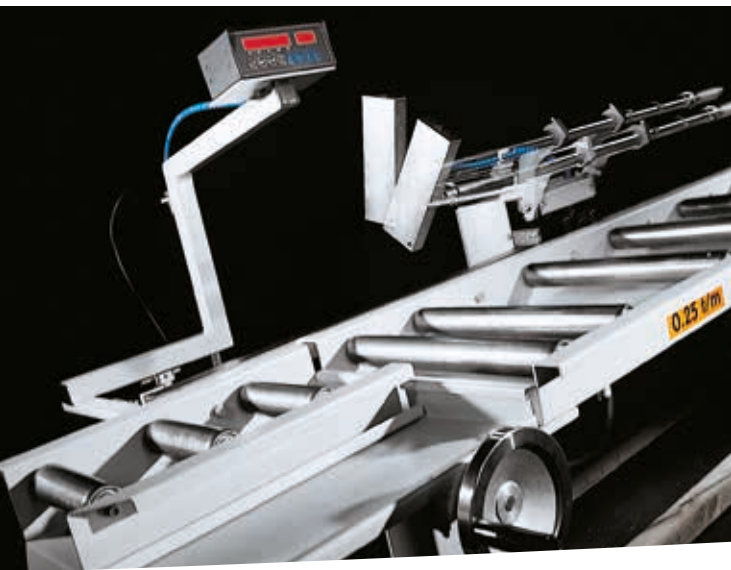
* short roller conveyor



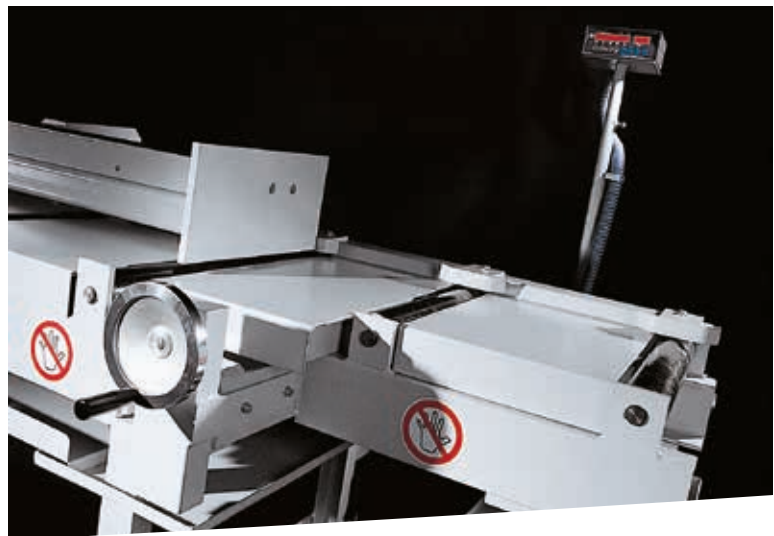
Manual measuring stop KASTOexact M 150.



Digital measuring stop KASTOexact D 150.



Digital measuring stop KASTOstop U 2.



Digital measuring stop KASTOstop U 5.

High Productivity and Quality with KASTO Measuring Systems.

KASTOexact M 150

- Length measuring system for manual adjustment of measuring length.
- High measuring accuracy via vernier.
- The stop arm is manually liftable and lowerable for better removal of material.
- Short measuring length by means of attachment tongue

KASTOexact D 150

- Easy handling, high measuring accuracy by digital readout of measuring length
- The stop arm is manually liftable and lowerable for better removal of material.
- Short measuring length by means of attachment tongue

KASTOstop U 2

- Length measuring system for digital adjustment of measuring length via handwheel.
- Positioning accuracy +/- 0,1 mm, stop force 100 kg.
- The stop arm is manually liftable and lowerable for better removal of material.

KASTOstop A 2 (without picture)

- Length measuring system for motor-driven adjustment of measuring length via NC.
- Pre-selection of up to 999 combinations of cut-off lengths and cut-off numbers.
- Automatic clamping of measuring carriage after positioning.
- The stop arm is manually liftable and lowerable for better removal of material.

KASTOstop U 5

- Heavy-duty measuring system for motor-driven roller conveyors. removal.
- Length measuring system for digital adjustment of measuring length via handwheel.
- Positioning accuracy +/- 0,1 mm, stop force 300 kg.
- The stop arm is manually liftable and lowerable for better removal of material.

The Complete KASTO Program: Economic Sawing and Storing of Metal.

Expertise right
down the line.

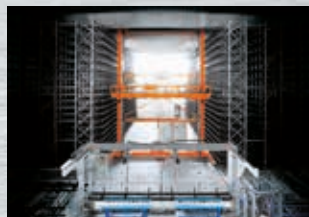
For over 170 years, KASTO has been recognized for quality and innovation, and offers a complete range of metal cutting saws, as well as storage and retrieval systems. Thanks to an ongoing development of new technologies and constant optimization process of machine concepts, KASTO has achieved the status of market leader in sawing and storing of metals.

KASTO's
Sawing Machines.



From the basic hacksaw to the high-performance automatic bandsaw capable of economically processing bar stock, blocks or plates of all grades, KASTO has the best solution for every challenge: Universal bandsaws and circular saws for light and medium applications, hacksaws employing the pushing-arching-cutting motion originated by KASTO, and production bandsaws and circular saws designed to cut medium to difficult materials.

KASTO's
Storage Systems.



Rapid access, optimum space utilization, clear and accurate view of stored inventory – KASTO storage systems' excelling features. And there's more! Fully automatic sawing centers, cantilever bar and sheet metal storage systems or cassette storage and commissioning systems, combined sawing and storage systems with integrated inventory control computers. As a one-source supplier, KASTO delivers the complete system, both hardware and software.

KASTO's
Service.



KASTO's comprehensive service program includes everything: from commissioning and training to maintenance support, service contracts, readily available spare parts and on-site service. KASTO's service incorporates individual consulting and immediate support with well-qualified teleservice. And of course, KASTO service is available worldwide.

Your KASTO Partner



KASTO
Maschinenbau GmbH & Co. KG
Industriestr. 14
77855 Achern/Germany
Phone +49 7841 61-0
Fax +49 7841 61-300
E-Mail kasto@kasto.com
Internet www.kasto.com